



8 Peaks View Drive
\$2,950,000

Big Sky

Sotheby's
INTERNATIONAL REALTY



Enjoy great ski access, incredible views and great privacy in this gorgeous Cowboy Heaven Home. A ski run next to the house takes you directly to Moonlight's 6-Shooter high speed lift. Marvel at the panoramic views of the Spanish Peaks from almost any room in the spacious 5900+/- square foot home. Relax in the peaceful, secluded wooded surrounds of this exceptional property. This high end custom home has 4-bedroom suites and a bunk room, 5 ½ baths, beautiful covered deck with wood burning fireplace, 4 additional stone fireplaces, great room, family room, chef's kitchen, and a large room to grow above the attached garage.

Additional Features Include:

Living Room

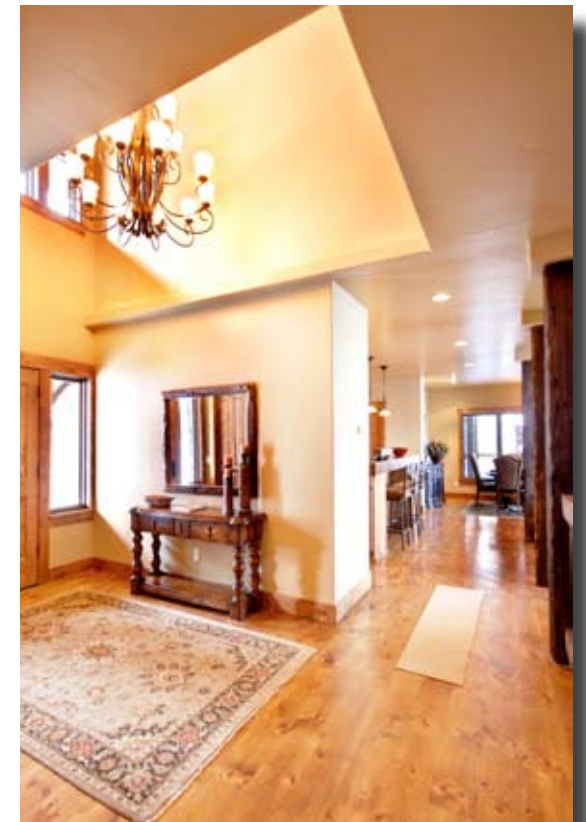
Timbered Ceilings with 2 overhead fans

Massive Chief Joseph stone fireplace w/built-in wood storage

Custom fireplace screen

Timbered mantle

Recessed ceiling with hidden mood lighting





Kitchen

36" GE Monogram side by side refrigerator
GE Monogram dishwasher
48" Wolf commercial range with 6 burners and griddle and 2 ovens
GE Profile microwave
Granite counters with rustic old bridge timber beam counter top/breakfast bar
Honed marble backsplash
Bar sink



Dinning Room

Unsurpassed views of Spanish Peaks
Adjoins covered deck with stoned fireplace

Powder Room

Beautifully unique wash stand with iron finish

Pantry

Custom shelving and wine storage



Laundry Room

Maytag washer and dryer
Cabinets
Large folding area

Master Bedroom Suites

14x15 (bathrooms and walk-in closet)
Wake up to incredible views
Extreme privacy of quarters – no need for window treatments

Stone gas fireplaces with timber mantels
Wired for flat-screen TV
Large, elegant bathrooms with tub and shower
Beautifully situated tile and stone work
Walk-in closets

Garage

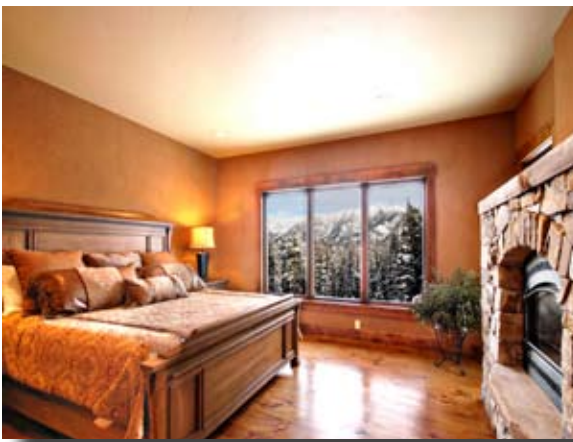
Large oversized 2 car
Room for a multitude of storage
Built in tiled dog wash
Steps lead to/from Natawista Ski Trail which leads you directly to the Madison Village area (the central location for Moonlight's skiing which includes, ski school, ski rentals, ski shop, lifts and the Headwater's Grille)

Bonus Room

Located above the garage with interior access
Finished with heating and carpeting
Ready for office, game area, children's room or extra living space
Fitted to expand for caretaker's quarters

Second Ground Floor Level

Entertainment Room and Bar
Walk out to the ground floor private living area wired for hot tub
Carpeted wool-Berber flooring
Timbered ceiling
Expansive views
Stone walled gas fireplace with timber mantle
Wired for flat screen TV



Bar

Provides complete services for the entertainment room

Includes: cork countertops, timber and concrete bar, counter sink, cabinets, GE Monogram bar refrigerator, microwave, dishwasher, ice maker and wine cooler

Second Ground Floor Level Extra Guest Bathroom

Elegant bathing area for extra guest and/or for convenience when getting out of the hot tub

Large, oversized shower

Dressing area with bench

Opens to the second floor outdoor living area and entertainment room

Additional Sleeping, Home Theatre, Game, or "Flex Room"

Carpeted and wired for sound



\$2,950,000

Please call to schedule an appointment to show.

Downstairs Master Suite

Private with inspiring views

Private bath

Large closet

Downstairs Guest Bedroom (Bunk Room)

Beautiful views

Excellent room for children

Includes a recessed area with 2 sets of California Twin bunk beds

Walk-in closet

Private bath with shower/tub and great storage

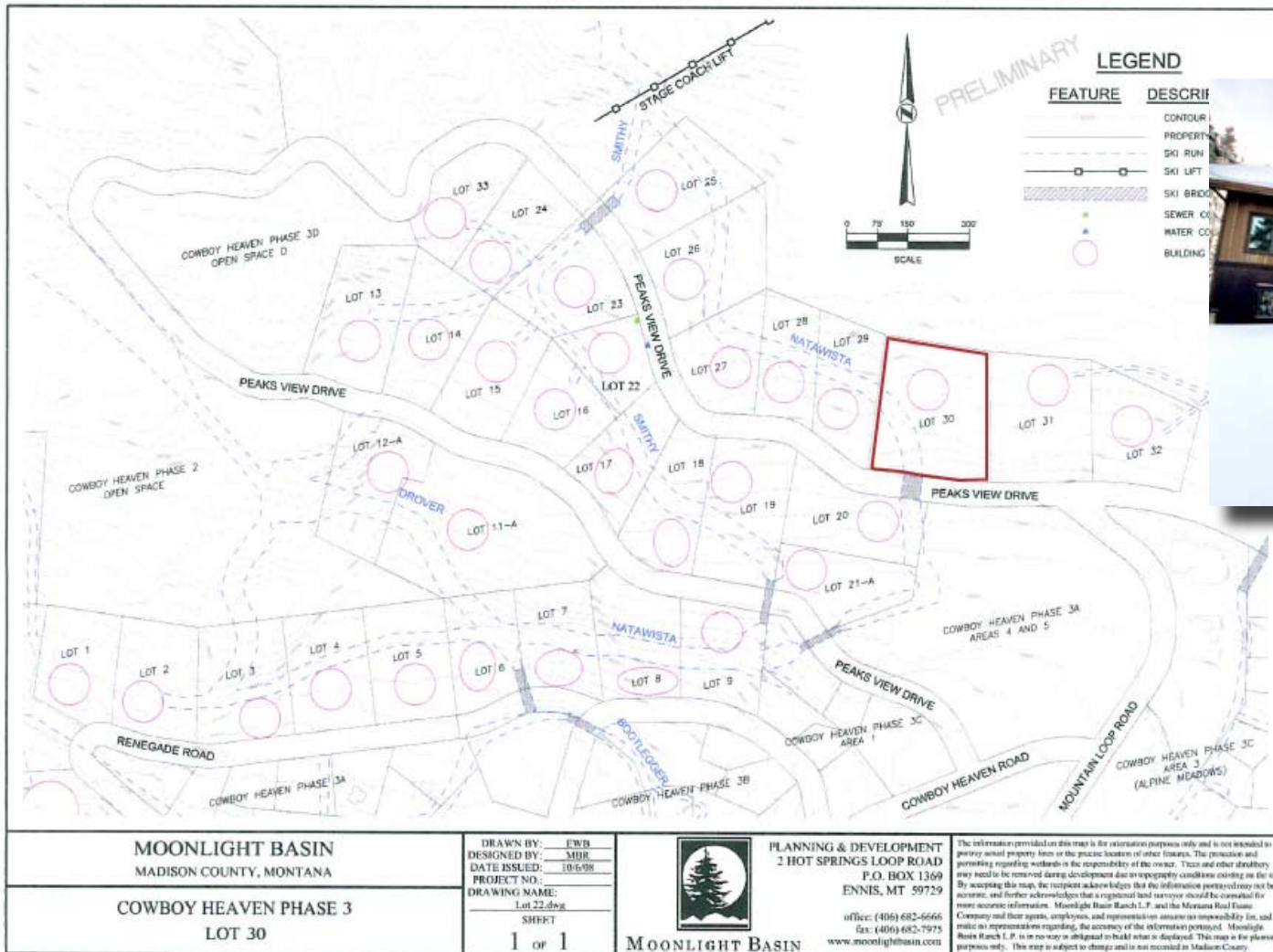


Big Sky | Sotheby's
INTERNATIONAL REALTY

Catherine Gorman
t 800.799.2919 t 406.995.2318
cathy.gorman@sothebysrealty.com

Tim Cyr
t 406.580.6316 t 866.995.2211
tim.cyr@sothebysrealty.com

19 Meadow Village Drive, P.O. Box 160056, Big Sky, MT 59716



2010 Taxes:	\$ 11,126.04
2008 Est. HOA Dues:	3,320.86
2007 Amerigas:	8,603.14
2007 NorthWestern Energy:	957.45
2007 KMR Property Mgmt:	2,982.43
MLS#:	173815

8 Peaks View Drive
 Cowboy Heaven, Lot 30
 Big Sky, Montana 59716

Big Sky | **Sotheby's**
 INTERNATIONAL REALTY

\$2,950,000

Please call to schedule an appointment to show.

Catherine Gorman
 t 800.799.2919 t 406.995.2318
 cathy.gorman@sothebysrealty.com
 Tim Cyr
 t 406.580.6316 t 866.995.2211
 tim.cyr@sothebysrealty.com
 19 Meadow Village Drive, P.O. Box 160056, Big Sky, MT 59716

